

## 10118

### BRAKE PEDAL FORCE SENSOR

The 10118 Pedal Force sensor is used to evaluate the force requirements of new and existing brake systems. The transducer adapts to pedals in automobiles, trucks, buses, or material handling equipment. It mounts directly to the pedal with spring-loaded, quick-change clamping arms or cable ties for easy installation. The sensor is available in capacities ranging from 25 to 400 lbs. The required capacity needs to be specified at time of order.

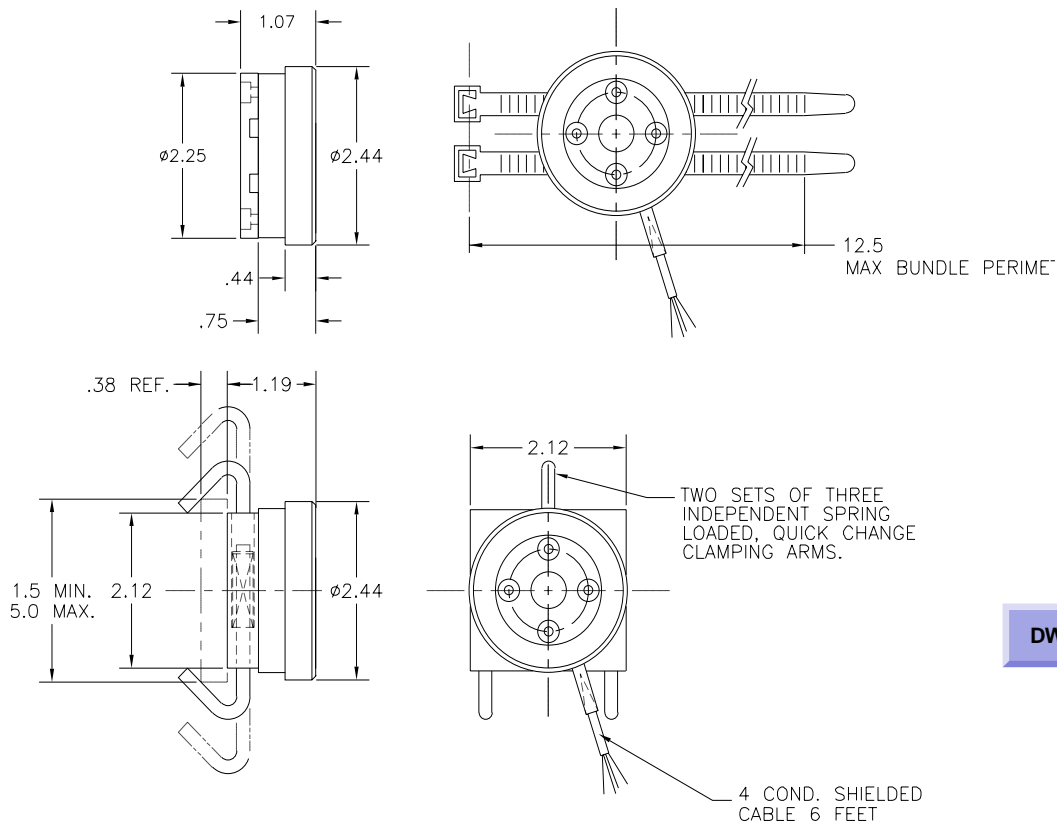


#### SPECIFICATIONS

Capacities..... 25 to 400 lbs. (See chart)  
 Overload capacity..... 150% of F.S.  
 Output at full scale load..... 2.0 mV/V nominal  
 Non-linearity..... 0.10% of F.S.  
 Hysteresis..... 0.10% of F.S.  
 Zero balance..... 1% of F.S.  
 Compensated temperature..... 70 to 170°F  
 Useable temperature..... -65 to +250°F  
 Temperature effect on zero..... 0.002% of F.S./°F  
 Temperature effect on span..... 0.002% of Rdg./°F  
 Bridge resistance..... 700 Ohms  
 Excitation voltage, maximum..... 20 Vdc

#### DIMENSIONS

MODEL	CAPACITY
	LB
10118-250	25
10118-051	50
10118-012	100
10118-022	200
10118-251	250
10118-042	400



DWG